

## APPLICATIONS

- Fire protection of structural steelwork

# Promat



Uniclass L68111 : L35	EPIC F811
CI/SfB (29)	R (K2)

November 2005

# PROMATECT®-250

## Staple Fix System for Fire Protection of Structural Steelwork

### GENERAL DESCRIPTION

PROMATECT®-250 is a non-combustible mineral bound light weight board. It has a smooth matt upper surface and is off-white in appearance.

PROMATECT®-250 provides a high degree of strength, dimensional stability and fire performance to structural steelwork.

A health and safety data sheet is available from the Promat Technical Services Department and, as with any other materials, should be read before working with the board.

The board is not classified as a dangerous substance and so no special provisions are required regarding the carriage and disposal of the product to landfill. They can be placed in an on-site skip with other general building waste which should be disposed of by a registered contractor.

**Table 1. General Technical Data**

Designation	Mineral bound calcium silicate
Material class	Non-combustible
Surface spread of flame	Class 1
Building regulations classification	Class 0
Nominal dry density (average) Kg/m <sup>3</sup>	700
Alkalinity (approximately) pH	9
Thermal conductivity (approximately) at 20°C W/mK	0.189
Nominal moisture content, ambient %	1-2
Thickness tolerance of standard boards mm	+0.5 to -0.5
Length x Width tolerance of standard boards mm	+0.0 to -3.0
Surface condition	Smooth, unsanded

**Table 2. Board Format Data**

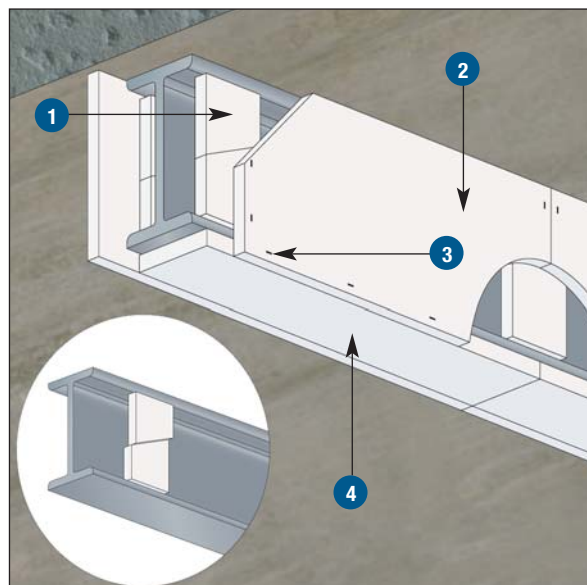
Thickness (mm)	Length x Width (mm)	Approx. Weight (kg/m <sup>2</sup> )	
		Dry	With approx. 2% moisture
12	2500 x 1200	8.4	8.6
15	2500 x 1200	10.5	10.7

#### NOTE:

- Other thicknesses available, please refer to the Promat Fire Protection Handbook.
- All physical property values are averages based on standard production. The figures can change dependent on the test methods used.
- If a particular value is of prime importance for a specification, please contact the Promat Technical Services Department.

### BEAMS

1. PROMATECT®-250 soldiers, 120mm wide positioned behind the side board joints and at 1250mm maximum centres or behind any board joints. Soldier thickness to be 15mm. No cover strips required behind board joint covering flanges.
2. PROMATECT®-250. Define A/V requirement for beams supporting and connecting to a concrete slab within table 2B or all other beams within table 2A. Stagger joints on adjacent sides by a least 530mm. Full length boards up to 2500mm long can be used. Secure boards to each other at corners, and to soldiers, using staples (3).
3. Chisel point staples, 50mm x 12.5mm x 1.6mm at maximum 150mm centres. Locate end staples 40mm from corner of board.
4. PROMATECT®-250, 15mm soffit board.



#### Key:

1. 15mm PROMATECT®-250 2. 12mm PROMATECT®-250  
3. Staples 4. 15mm PROMATECT®-250

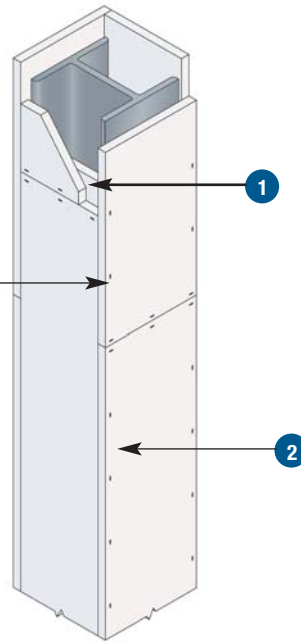
# Promatect®-250

Promat



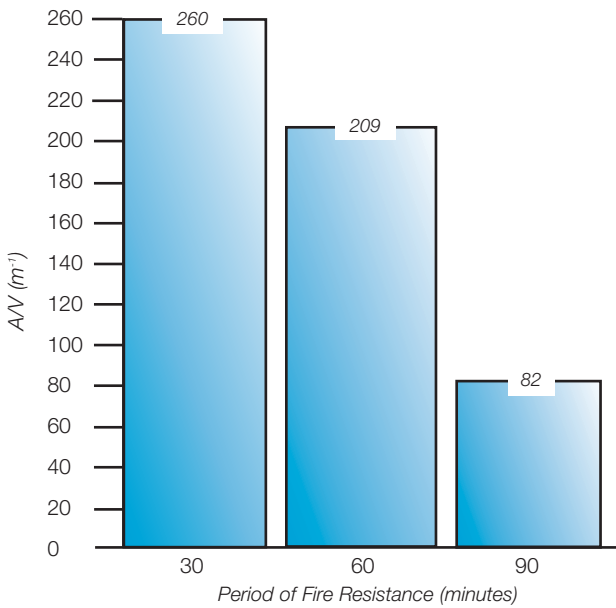
### COLUMNS

1. PROMATECT® -250 soldiers, 120mm x 12mm thick behind the horizontal joints in the casing. Cover strips are not required at other joints in the boards covering flanges.
2. PROMATECT® -250. Define AV requirement from Table 1. Stagger joints on adjacent sides by at least 530mm. Secure boards to each other at corners, and to soldiers, using steel chisel point staples, 50mm x 12.5mm x 1.6mm, at maximum 150mm centres. Full length boards up to 2500mm long can be used.
3. Chisel point staples, 50mm x 12.5mm x 1.6mm at maximum 150mm centres. Locate end staples 40mm from corner of board.

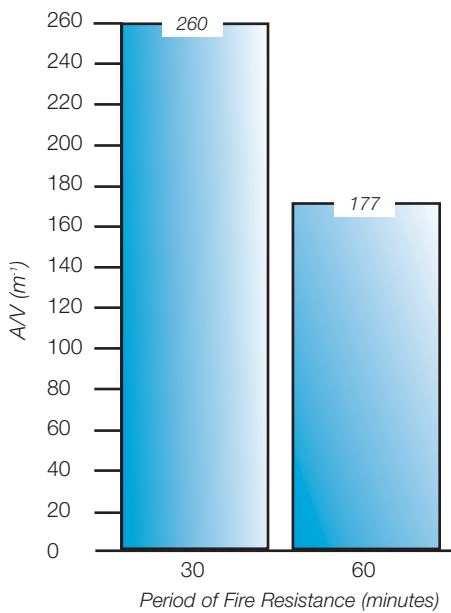


#### Key:

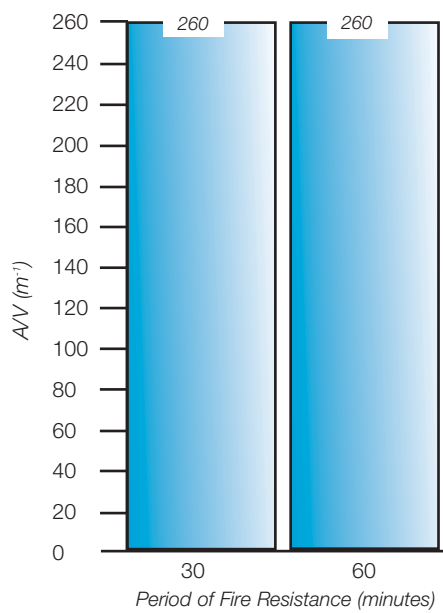
1. 12mm PROMATECT®-250
2. 12mm PROMATECT®-250
3. 50mm x 12.5mm x 1.6mm staples positioned at 150mm centres



**TABLE 1 12mm PROMATECT®-250**  
**COLUMN Protection = 550°C**



**TABLE 2A 12mm PROMATECT®-250**  
**BEAM Protection = 550°C**  
**(15mm soffit board)**



**TABLE 2B 12mm PROMATECT®-250**  
**BEAM Protection = 620°C**  
**(15mm soffit board)**



### TECHNICAL INFORMATION

For full details of applications, properties, cutting, fixing and decoration contact Promat Technical Services Department on 01344 381400, fax: 01344 381401.

# Promat



Promat UK Limited  
The Sterling Centre  
Eastern Road, Bracknell  
Berkshire RG12 2TD  
Tel: 01344 381 300  
Fax: 01344 381 301