

SUPALUX<sup>®</sup> and MASTERBOARD<sup>®</sup> are available with the option of rebated edges for 9mm and 12mm boards.

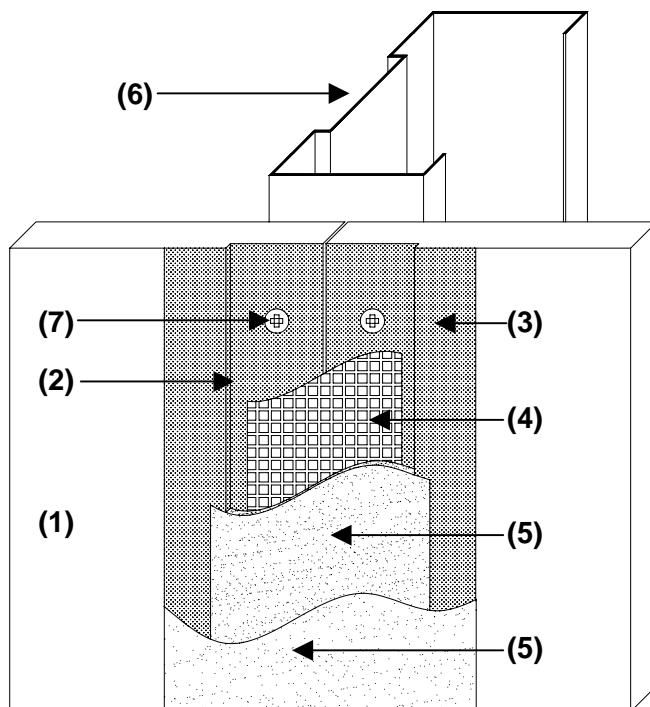
The rebating, which is machined along the two long edges (or all four edges for ceilings), enables seamless jointing of boards to be achieved.

Through simple taping and jointing of the shallow trough, formed by the butting of rebated boards, a smooth seamless joint is achieved which enhances and extends the aesthetic option for use in:

- CEILINGS
- PARTITIONS
- ROOF LININGS

**Legend:**

- 1) SUPALUX<sup>®</sup> or MASTERBOARD<sup>®</sup> (minimum 9mm thick)
- 2) Rebate, 30mm wide, 2mm deep (creating a 60mm wide joint).
- 3) PVA sealer.
- 4) Self-adhesive 50mm wide woven fibreglass jointing scrim.
- 5) PROMAT Moisture Resistant Joint Filler Compound.
- 6) Timber or steel stud support framework.
- 7) Dry wall self-tapping screw or dry wall nail.



**Flush Jointing with SUPALUX<sup>®</sup> and MASTERBOARD<sup>®</sup> is a simple three-stage process:**

- 1) **Preparation:** Prior to joint filling the joint profile should be sealed with a PVA or universal sealer.
- 2) **Filling the joint:** Apply the fibreglass tape to the rebate and fill the trough with PROMAT Moisture Resistant Joint Filler Compound.
- 3) **Finishing:** Finish with PROMAT Moisture Resistant Joint Filler Compound.

**Please Note:** To achieve optimum performance and aesthetics the following should be adhered to:

- 1) All nails and screws should be driven flush with the board.
- 2) Any gaps, greater than 2mm between the boards, should be completely filled with joint filler.
- 3) All installation recommendations (i.e. support centres, fixing methods etc) contained within the PROMAT Fire Protection Handbook should be complied with.

**AUTHORITY:** Promat Recommendation

Technical Data Sheet – 001

Page 1 of 1  
(Dec 2003)



**Promat UK Limited**  
 Technical Services Department  
 The Sterling Centre, Eastern Road  
 Bracknell, Berkshire RG12 2TD  
 Tel: 01344 381 400  
 Fax: 01344 381 401  
 E-mail: technicaluk@promat.co.uk

