

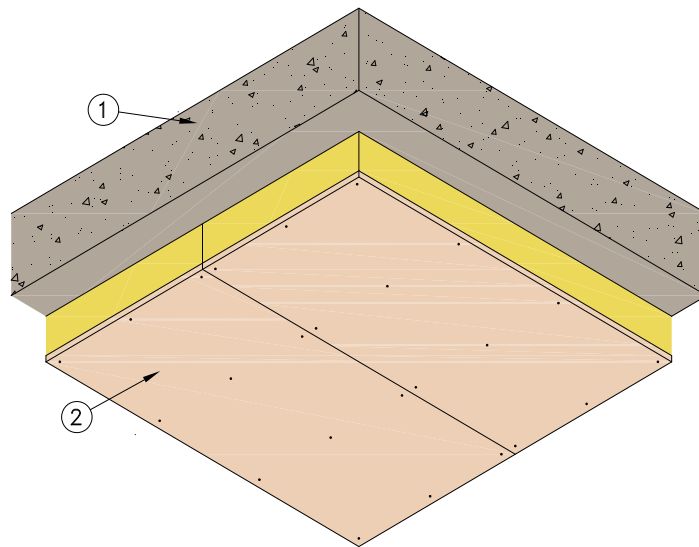
Introduction:

Promat® TL Board (2) is comprised of a calcium silicate facing board bonded to a phenolic insulation, and is specifically designed for the thermal upgrading of semi-exposed concrete decks (1). The thickness of Promat® TL Board used is dependent upon the required U-value, which in turn is dependent on the existing construction and method of fixing.

The following recommendations should be adopted only when Promat® TL Board is being fixed directly to the underside of a concrete deck.

Promat® TL Board *can* be installed using a12 fixings per board, to withstand wind load of 0.3 kN/m².

Please contact Promat UK Customer Relations team for fixing recommendations applicable for higher design wind loadings.



Fixing Centres:	Nominal 600mm across width and 760mm along the length.
Qty of Fixings:	Minimum 12 No. fixings per 1200mm x 2400mm board.
Edge Spacing:	Minimum 50mm from edge and minimum 50mm from corner.

Fixing Type:

HILTI X-IE 6:	Minimum 30mm penetration into concrete (plastic fixing). Contact Hilti Technical Department (0161 886 1144) to arrange site test, as required to allow recommendation of fastener length and installation method.
Fischer DIPK 10:	Minimum 30mm penetration into concrete (plastic fixing).
Fischer FM:	A 25mm diameter steel washer must be used with this fixing, minimum 30mm penetration into concrete (metal fixing).
Ejot DDS 7.3mm:	Minimum 20mm penetration into concrete (metal fixing).

All fixings should be sized and installed in accordance with the manufacturers recommendations.

AUTHORITY: Promat Recommendation - Based on in-house knowledge and technical experience