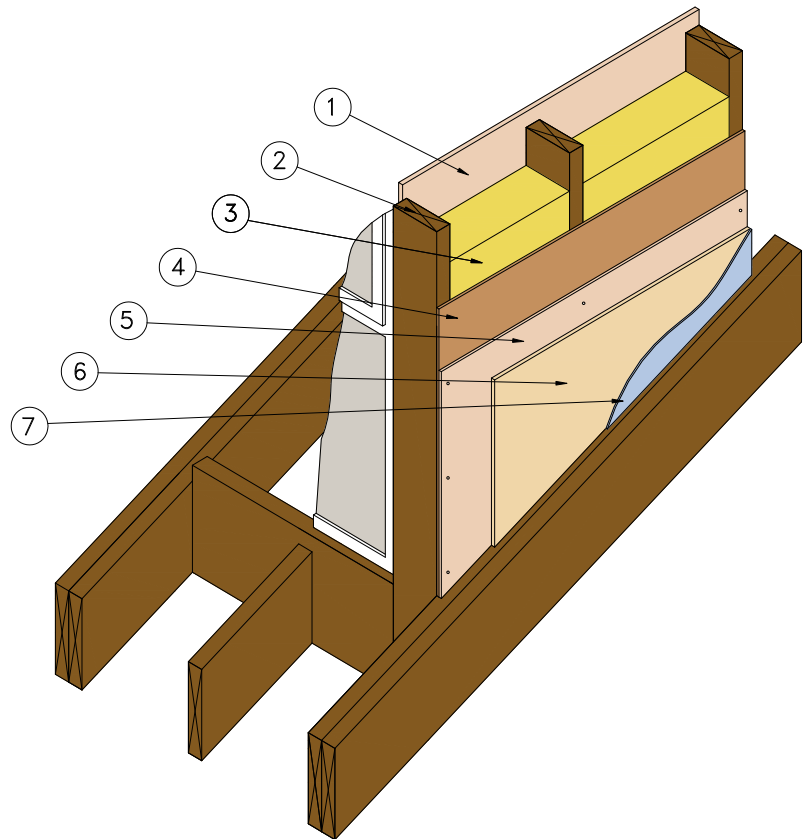


Introduction

It is important to consider the position of a dormer installation in relationship to the boundary line when the dormer cheek is less than 1 metre from the boundary. Where this occurs, The Building Regulations may require the dormer cheek to provide a period of fire resistance, to restrict possible fire spread between buildings.

Whether the dormer cheek will need to be fire protected will depend upon the m² area of the cheek, the m² of other unprotected elements of the facing wall and external surface finishes. The Building Control Office should be consulted for guidance.

The following construction may be adopted where the dormer cheek requires 60 minutes fire resistance, both internally and externally.



Construction (from the internal side)

- 1) 15mm thick (or 2 x 9mm) SUPALUX® board, or an alternative system to provide 60 minutes fire protection, with vapour barrier. Boards fixed to timber studs using minimum 50mm long round head nails at nominal 150mm centres.
- 2) Timber studwork, minimum of 100mm x 50mm at 610mm centres, but sized to suit the dormer construction by a specialist roofing company, structural engineer or suitably qualified person. Deeper stud likely to be required to allow specific U values to be achieved.
- 3) Rock wool insulation between studwork, of suitable thickness and density to achieve the required U value (W/m²K) in accordance with Part L of the Building Regulations (Combustible foam insulation should not be used in this fire resistant construction).
- 4) 9mm Structural Sheathing Board (e.g. OSB) fixed with 2.8mm diameter annular shank nails at 150mm maximum centres.
- 5) 15mm thick (or 2 x 9mm) SUPALUX® board, fixed to timber studs using 50mm long round head nails at nominal 150mm centres. Breather paper required over outside board surface.
- 6) External cladding (e.g. weatherboard or slates hung on timber battens) fixed through the Supalux and into timber studs. External surface normally required to be Class O according to requirements of The Building Regulations. External cladding should be vapour permeable.
- 7) Decorative finish, if required.

Fire performance: 60 minutes integrity and insulation in accordance with BS 476: Part 22: 1987.

AUTHORITY: Promat Recommendation - Based on in-house knowledge and Technical Experience

Technical Data
Sheet – 086

Page 1 of 1
(Feb 2009)



Promat UK Limited
 Technical Services Department
 The Sterling Centre, Eastern Road
 Bracknell, Berkshire RG12 2TD
 Tel: 01344 381 400
 Fax: 01344 381 401
 E-mail: technicaluk@promat.co.uk

