

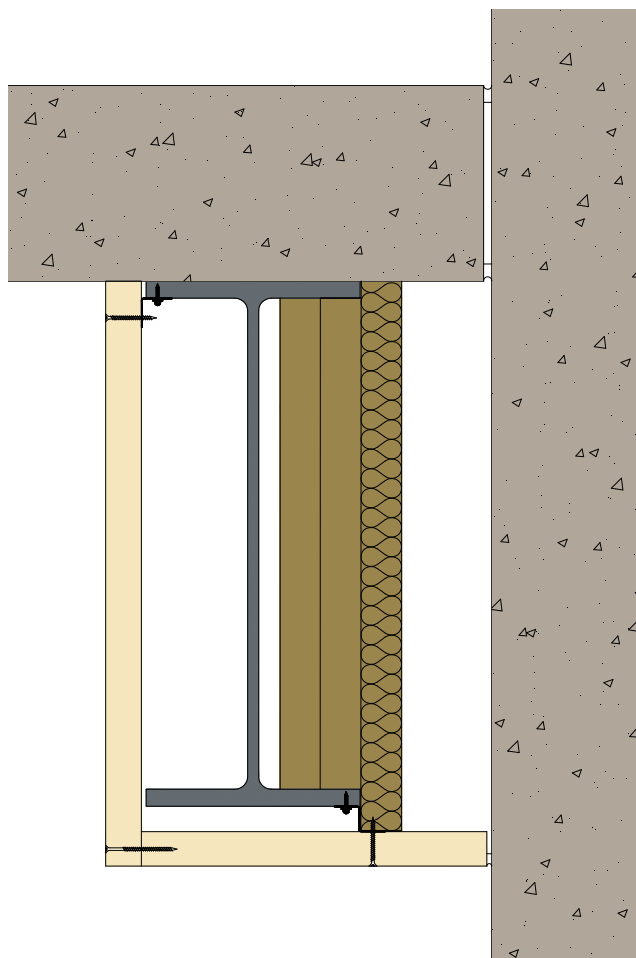
### Introduction

Beams that support the edge of a concrete slab will normally require to be fire protected on the two exposed faces.

However, where the adjacent wall is independent of the floor slab or where the proximity of the adjacent wall is not close enough for a reliable support fixing to be taken off the wall, then alternative fixing arrangements will be required. This is likely to require that provision is made to fire protect the back face of the beam as well.

Installing fire protection cladding to the back face of the beam may prove difficult, particularly if the access to the rear face of the beam is severely restricted.

In these circumstances the following procedure may be adopted, using Promat TD Board® in the area of restricted access.



### Procedure

Whilst fixing the VERMICULUX® into restricted spaces may be particularly difficult, due to the nature of the fixing methods used, Promat TD Board® is more adaptable in this respect, as it may be adhesive fixed to Promat TD Board® noggings.

**Note: Mixing cladding material/systems in this way should not be freely adopted universally, and it must be emphasised that Promat Technical Services must be consulted regarding its use on a case by case basis.**

The section factor for the beam should be calculated as a *three sided* enclosure, and used to derive the thickness of both cladding products from the appropriate section factor tables. (Note: The thickness required for the two products may be different.)

A 25 x 25 x 25 x 0.65mm Z section is used to provide a connecting support rail between the VERMICULUX® and the Promat TD Board® on the soffit of the beam edge. The VERMICULUX® soffit board is extended beyond the beam to close the opening between the beam and the wall. Consideration must however be given to any differential movement of the wall, and arrangements for any movement accommodated.

A projection of up to 100mm to the wall does not require any additional support, but for a soffit extension of over 100mm and up to 250mm, a light gauge angle is required at the wall to support the VERMICULUX® board. Above 250mm, consult Promat Technical Services Department.

**AUTHORITY:** Promat Recommendation - Based on in-house knowledge and Technical Experience

Technical Data  
Sheet -096

Page 1 of 1  
(Sept 2008)



**Promat UK Limited**  
Technical Services Department  
The Sterling Centre, Eastern Road  
Bracknell, Berkshire RG12 2TD  
Tel: 01344 381 400  
Fax: 01344 381 401  
E-mail: technicaluk@promat.co.uk

