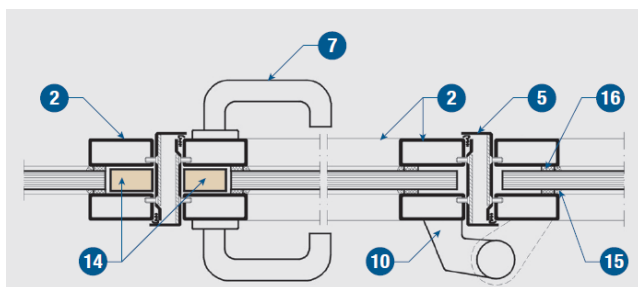
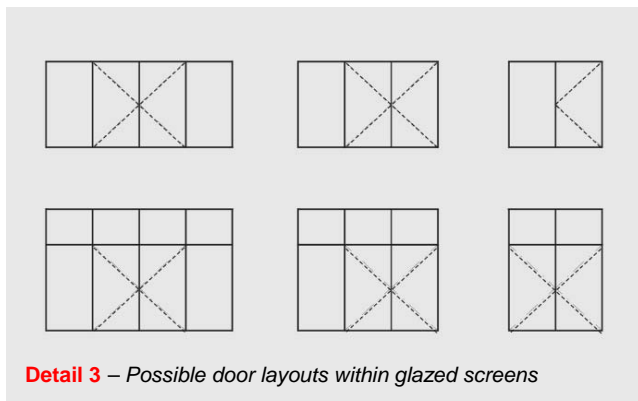


T- Door within a Promat SYSTEMGLASS® framed screen

Detail 1 – Elevation



Detail 2 – Horizontal section (Section A-A)



Detail 3 – Possible door layouts within glazed screens

Promat SYSTEMGLASS® Single & Double Leaf Fire Doors: - Within Framed Screens.

Promat SYSTEMGLASS® T-doors are constructed without any visible glazing beads on the retaining frame and it can be built as single or double leaf door in a Promat SYSTEMGLASS® framed screen element. A choice of floor or head mounted closers can be proposed as well as their selected hardware.

30 and 60 minutes fire rating, integrity and insulation in accordance with the criteria of BS 476: Part 22: 1987.

Door Clear Opening Size:

Door type	Height (mm)	Width (mm)	Fire rating (minutes)
Single leaf Single action	1656 - 2156	462 - 1332	30 or 60
Double leaf Single action	1656 - 2156	1187 - 2312	30 or 60

Components

- (1) Glass thickness - 30 minutes fire rating (T-30): Promat SYSTEMGLASS® F30, 17mm thick.
Glass thickness - 60 minutes fire rating (T-60): Promat SYSTEMGLASS® F60, 21mm thick.
- (2) Promat SYSTEMGLASS® door with steel hollow section 60mm x 25mm x 2mm single or double leaf door for 30 and 60 minutes fire rating.
- (3) Promat SYSTEMGLASS® screen
- (4) Optional door mid rail.
- (5) Rebate profile, fixed with self-tapping screw or rivet, optionally welded.
- (6) Rubber anti-shock seal or smoke seal.
- (7) Door handle.
- (8) Floor and adjacent walls with fire resistance equal to or better than glazing system.
- (9) Rock wool, 15mm thick, compressed.
- (10) Dorma 7431K or similar approved hinge and floor spring systems.
- (11) Masonry fixing, expansion bolt or similar perimeter frame fixings at nominal 500mm centres.
- (12) PROMASEAL® PL strip.
- (13) Steel plate.
- (14) SUPALUX® strip, minimum 27mm wide x 20mm thick.
- (15) Promat SYSTEMGLASS® silicone mastic.
- (16) Self adhesive ceramic glazing tape, 10mm x 3mm.
- (17) Steel hollow section, for screen heights over 3000mm, it is necessary to use a larger profile on the near face of the door frame to provide additional stiffness

Detail 1 – Elevation

The length of the glazed wall is unlimited; the maximum height is currently restricted to 4000mm. The door may be manufactured with or without a mid rail.

Detail 2 – Horizontal section (Section A-A)

The door hardware, handles, hinges etc, may be sourced from various manufacturers, but must have certification to prove the suitability for use in Promat SYSTEMGLASS® or similar applications

Detail 3 – Possible screen / door layouts

A combination of single or double leaf doors, sidelights and over panels, etc, is offered to the specifier to obtain the desired visual appearance.

AUTHORITY: Warrington Bodycote WF Report No. 176591

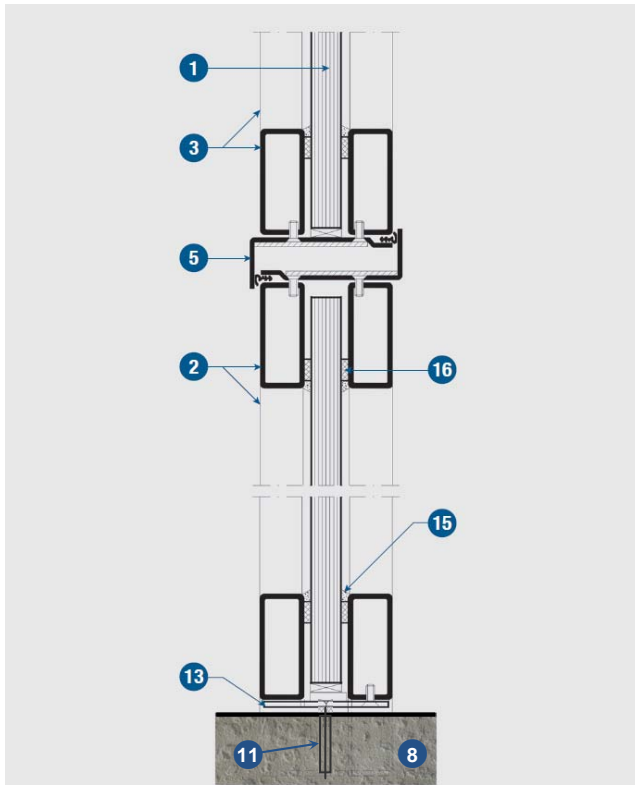
Technical Data Sheet – 148

Page 1 of 2
(August 2011)



Promat UK Limited
Customer Relations Team
The Sterling Centre, Eastern Road
Bracknell, Berkshire RG12 2TD
Tel: 01344 381 400
Fax: 01344 381 401
E-mail: technicaluk@promat.co.uk





Detail 4 – Vertical section (Section C-C)

Detail 4 – Vertical section (Section C-C)

The Promat SYSTEMGLASS® T- doors are constructed using 60mm x 25mm x 2mm steel box sections, together with a rebated profile, fixed with self-tapping screw, rivet or optionally welded to form the frame and stop details. The frame incorporates the rubber shock (or smoke seal) together with the PROMASEAL® PL strip intumescent door seals. As shown in *detail 5*.

When incorporating Promat SYSTEMGLASS® T-doors into SYSTEMGLASS® screens, it may be appropriate to resize the Promat SYSTEMGLASS® screen framing, to match the door frame and jamb profiles for aesthetic purposes (in order to avoid a shadow lines, and maintain consistency of appearance).

Detail 5 – Door stop

Stop profile construction incorporating anti-shock and intumescent seals.

Detail 6 – Door frame detail (Screens greater than 3000m high)

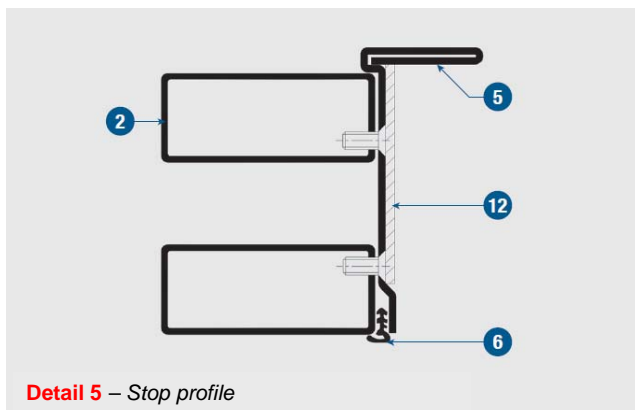
Where screen heights exceed 3000mm, the standard framing section is required to be increased in profile (17), to provide additional support stiffness to the jamb.

NOTE 1: Under no circumstances should the edging tape be removed from the glass. It is there to prevent ingress of moisture or acetate from the silicone sealant entering the intumescent layer and causing discolouration.

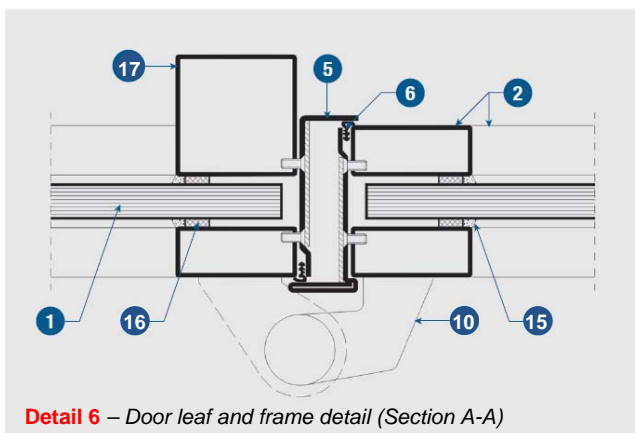
NOTE 2: Promat SYSTEMGLASS® is designed for use in internal applications. It should not be used in high humidity, semi exposed or external applications.

NOTE 3: For SYSTEMGLASS® framed screens refer to TDS124 (August 2011).

NOTE 4: Refer to TDS121 (August 2011) for more details on the Promat SYSTEMGLASS® system.



Detail 5 – Stop profile



Detail 6 – Door leaf and frame detail (Section A-A)

AUTHORITY: Warrington Bodycote WF Report No. 176591