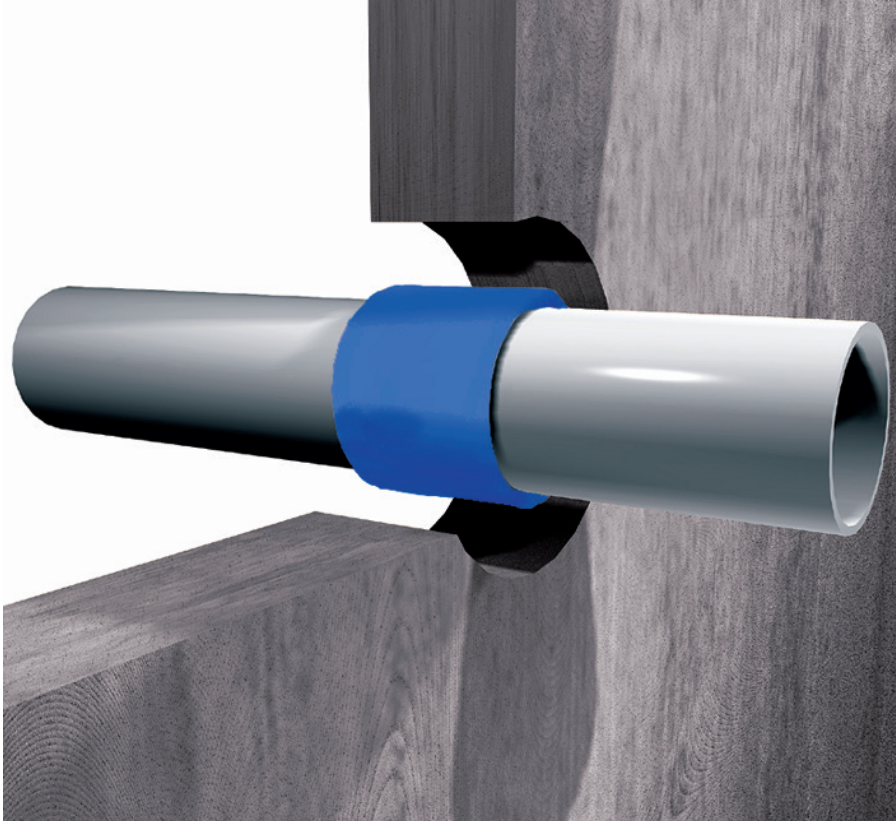


Promat PROMASEAL® Pipewrap



Product description

Promat PROMASEAL® Pipewrap consists of a water resistant sleeve around a flexible intumescent core.

Application

Promat PROMASEAL® Pipewrap prevents the passage of smoke, toxic gases and fire through gaps in compartment walls and floors caused by the collapse and/or melting of combustible services in the event of fire.

Promat PROMASEAL® Pipewrap is used to maintain the fire resistance of walls and floors when they are penetrated by combustible pipework such as PVC drainage pipes.

Installation

General

Promat PROMASEAL® Pipewrap is always installed into a prepared opening within walls or floors.

The Promat PROMASEAL® Pipewrap is wrapped around the pipe to be protected and secured tightly in position by means of the adhesive tab. It is then slid along the pipe until it is contained within the prepared opening. The Promat PROMASEAL® Pipewrap is grouted into position using Promat PROMASEAL® Fire Compound or PROMASEAL® Intumescent Acrylic Sealant.

A single Promat PROMASEAL® Pipewrap should be fixed in the anticipated fire side of the wall or floor. Any cavity around the Promat PROMASEAL® Pipewrap should be filled with Promat PROMASEAL® Fire Compound.

When there is a risk of fire from both sides, two wraps should be used to allow the intumescent material to be flush with each face of the wall or floor. Normally, one can assume that a floor will only require to resist fire from below, and therefore will require one wrap.

As each wrap is 60mm wide, only one wrap is required for walls or floors 100mm thick, even if there is risk of fire from both sides. Normally, walls and floors of this thickness will only provide 60 minutes fire resistance.

Promat PROMASEAL® Pipewrap - BS 476: Part 20: 1987 Approval Matrix

Product Name	PROMASEAL® Pipewrap			
Coating / DFT	N/A			
Density	N/A			
PVC Pipe Size* (up to)	Wrap size (width x thickness)	Wall/Floor Thickness	Integrity	Insulation
63mm Ø by 3.2mm wall thickness*	60 x 3.5mm	150mm	180 minutes	180 minutes
110mm Ø by 3.2mm wall thickness*	60 x 6mm	150mm	180 minutes	180 minutes
MDPE Pipe Size (up to)	Wrap size (width x thickness)	Wall/Floor Thickness	Integrity	Insulation
63mm Ø by 6.5mm wall thickness	60 x 3.5mm	150mm	240 minutes	240 minutes
90mm Ø by 9mm wall thickness	60 x 6mm	150mm	240 minutes	240 minutes
HDPE Pipe Size (up to)	Wrap size (width x thickness)	Wall/Floor Thickness	Integrity	Insulation
110mm Ø by 7mm wall thickness	60 x 6mm	150mm	240 minutes	240 minutes
ABS Pipe Size* (up to)	Wrap size (width x thickness)	Floor Thickness	Integrity	Insulation
160mm Ø by 10.5mm wall thickness	60 x 6mm + 60 x 3.5mm (Floor only)	150mm	240 minutes	240 minutes

* Performance in accordance with BS EN 1366-3: 2004

Maximum aperture	183mm Ø
Walls/Floors	The walls and floors shall be a minimum of 100mm thick for periods of up to 60 minutes integrity performance and 150mm thick for periods of up to 240 minutes integrity. The minimum density for the concrete or brick of the wall is 780kg/m ³ and for walls made of concrete blocks is 600kg/m ³ . All concrete or masonry walls or floors shall have at least the same fire rating as that required of the pipe wrap.
Application Technique:	Concrete/masonry walls and floors: The Pipewrap is folded around the pipe and secured tightly with adhesive tape. The wrap is then slid along the pipe into the wall or floor aperture and grouted into position using Promaseal Compounds or Promaseal Intumescent Acrylic Sealant.
Service Coat-Back	Not required
Service Support Requirements	Services should be rigidly supported via steel angles, hangars or channels, not further than 500mm from the surface of the sealing system on both faces.

Technical Services

For technical support and advice
T: 0800 145 6033 or 01275 377 789
E: technical.promat@etexbp.co.uk

Etex Building Performance Limited

Marsh Lane, Easton-in-Gordano, Bristol, BS20 0NE
T: 0800 373 636 F: 01275 379 037
W: www.promat.co.uk