

INTRODUCTION

PROMATECT® -250 is a non-combustible mineral bound light weight board, designed to provide a high degree of strength, dimensional stability and up to 150 minutes fire protection to structural steelwork, in terms of the loadbearing capacity criteria of BS 476: Part 21: 1987.

The degree of fire protection depends on the A/V section factor and the limiting temperature of the steel, this in turn dictates the thickness of PROMATECT® -250 required

The partition may be fire rated or non-fire rated.

If the partition connected to the column is non-fire rated then it is probable that the facing boards will either burn or fall away before the end of the specified fire resistance period for the column. It must be ensured as far as practical that the collapse of the facing boards does not damage the column casing.

The following recommendations should be adopted where a partition system is connected to one or both flanges of PROMATECT® -250 protected steel columns. The maximum height of the columns and partitions is 5m.

If it is also required to provide fire insulation across the beam or column in order to maintain compartmentation to the criteria of BS 476: Part 22:1987 (maintaining insulation to average temperature rise of 140°C, maximum temperature rise 180°C), then the minimum thickness of the PROMATECT® -250 board on each side of the beam or column must be as follows:

Fire resistance (minutes)	Board thickness (mm)
60	12
90	15
120	20
150	25

Thicker board may be required to provide the required period of fire protection to the steelwork in terms of the loadbearing capacity to BS476: Part 21:1987

The arrangement shown in Figure 1 is for applications where the PROMATECT® -250 casing has been erected before the addition of the partition system.

The arrangement shown in Figure 2 assumes that the fixing straps are installed before the PROMATECT® -250 casing.

Note: Where a limiting temperature has not been provided, then Promat will have specified the protection thickness to the default value of 550°C.

However, the user should be aware that this default temperature may not necessarily be adequate, or appropriate, for the proposed use for which the building is intended, and this default temperature specification must be verified with the structural fire designer concerned.

The load on the structure at the time of the fire can also be calculated by treating it as an accidental limit state. If used, this will allow structural fire designers to specify a limiting or failure temperature for a given structural section, to be provided to the fire protection contractor. Where the limiting temperature is provided, Promat will specify the structural steel protection thickness, appropriate to that temperature.

AUTHORITY: WF ASSESSMENT REPORT NO: 164072



Etex Building Performance Limited

Marsh Lane, Bristol BS20 0NE | 0800 145 6033
technical.promat@etexbp.co.uk | www.promat.co.uk

etex building performance

Figure 1

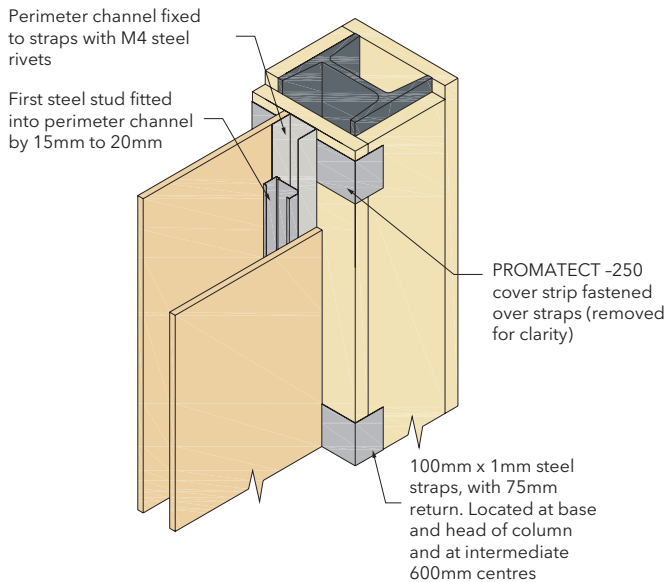
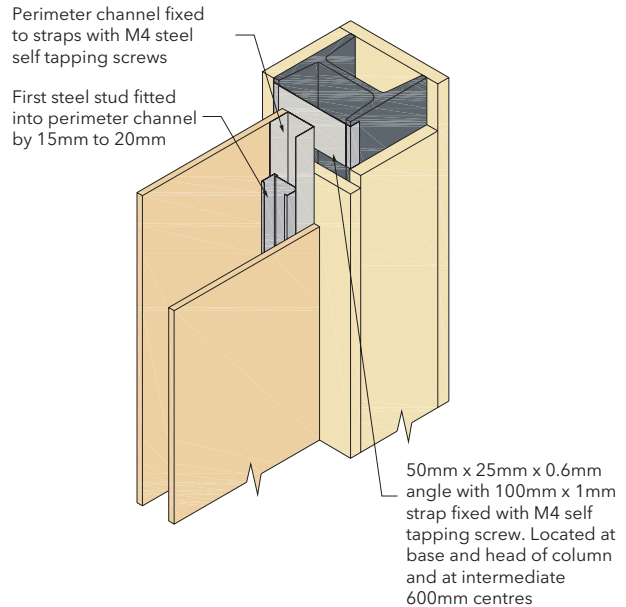


Figure 2



CONSTRUCTION

Figure 1:

Steel straps, made from 100mm x 1mm steel formed around the PROMATECT®-250 casing with 75mm return, are fastened to the column flanges, through the PROMATECT®-250, with two M4 self tapping screws each side.

The straps are located at the head and base of the column and at 600mm centres in between.

A vertical steel channel is fastened to the straps with M4 steel screws, and the first steel stud is fitted into the channel by 15- 20mm.

The facing boards are screwed to the first stud, but not to the end channel and should abut to the PROMATECT®-250 casing.

A PROMATECT® -250 cover strip is fastened over the steel straps on both sides of the partition.

If rock wool is fitted in the cavity of the partition then this must also be fitted to the end channel.

Figure 2:

Continuous steel angle, 50mm x 25mm x 0.6mm, is fastened to the flange toes of the column HILTI shot-fired nails at nominal 600mm centres.

100mm x 1mm flat straps are fastened to the angles with 2 off M4 self-tapping screws at either end.

The straps are located at the head and base of the column and at 600mm centres in between.

A vertical steel channel is fastened to the straps, through the PROMATECT® -250, with M4 steel screws. The first steel stud of the partition system is fitted into the channel by 15-20mm.

The facing boards are screwed to the first stud, but not to the end channel and should abut to the PROMATECT®-250 casing.

If the partition is fire rated then rock wool, minimum 60kg/m³ density, must be fitted into the end channel.

AUTHORITY: WF ASSESSMENT REPORT NO: 164072 - CONTRACT ASSESSMENT

